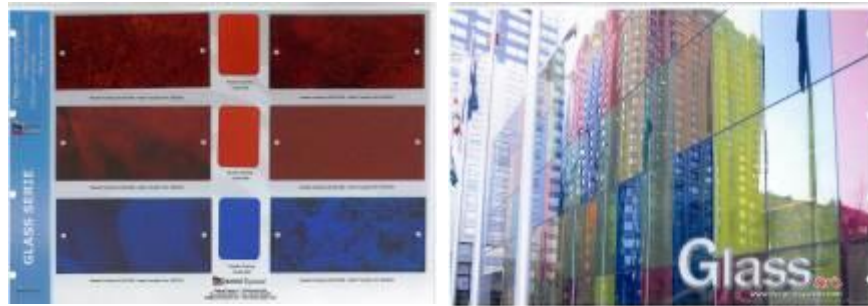


Dedicated marketing material:

- MRK-005-0273



- MRK-005-0274



Marchi di qualità registrati di Decoral System®



DECORAL SYSTEM SRL

Viale del Lavoro, 5 - Arcole 37040 (Verona) ITALY - Tel. +39 045 7639111 - Fax +39 045 7639100
Email: info@decoral-system.com - Website: www.decoral-system.com

TECHNICAL TOOLS

Laboratory Tests and Technical Documentation

MRK-012-0040rev03

Decoral System®

GLASS-XXX

Special translucent powder-coatings

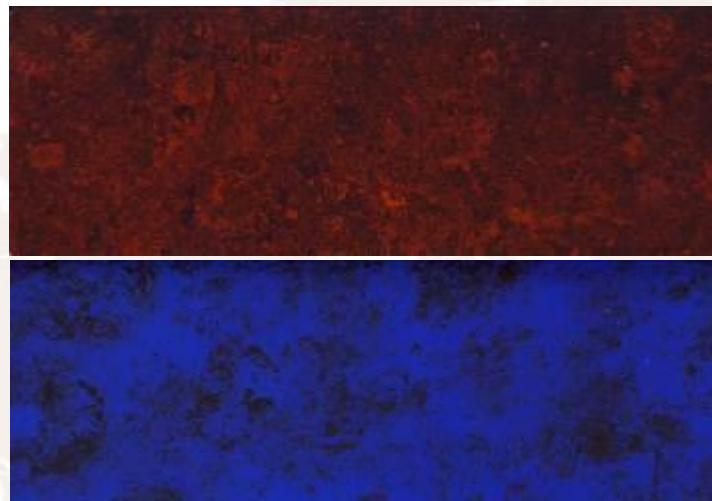


Information:

1. *Product features*
2. *Technical information*
3. *Options and special formulations*
4. *Double coating*
5. *Possible use*

1. Product features

The brilliance of the colors is what makes *Glass* powders a very special kind of coating: the pigmentation of these powders allows indeed a unique effect, with a peculiar translucency that lets you see the surface below the powder. Every option of formulation (textured, matt, glossy...) allows obtaining a unique effect in each time.



Picture 1: Glass-001 decorated with film 5026/02 (above) and Glass-003 decorated with 6052/01 (below).

2. Technical information

- Technical data

Chemical nature	Polyurethane
Covered area for unit weight	13,1 m ² /Kg
Specific weight	1,27 ± 0,03 g/cm ³

- Application and curing cycle

Available for corona charging.

Curing time and temperature: 25 minutes at 195°C – 383°F (metal temperature).

Recommended thickness: 60 microns – yield 13.1 m²/Kg,

70 microns – yield 11.2 m²/Kg,

80 microns – yield 9.8 m²/Kg.

- Mechanical properties

Test	Standard reference	Result
Buchholz hardness	ISO 2815	ok
Cross-cut	ISO 2409	no loss of adhesion: ok
Bending	ISO 1519	no loss of adhesion: ok
Salt spray	ISO 9227	corrosion <4 mm: ok

3. Options and special formulations

Several options of this series are available:

- Antimicrobial;
- Textured, matt, or glossy;
- Anti-Graffiti;
- Low curing temperature.

4. Double coating

The double coating technique nicely suits the low hiding power, which is typical of this series; when the *Glass* powders are used as second layer on PE411 (which is a special polyester product ideal as first layer), then the color is fully emphasized.

5. Possible use

The *Glass* powders are fully valued when the surface underneath can be glimpsed, so that new and unusual effects are created; but also when double coating highlights the color.



Picture 2: Jugs decorated with Glass-001 (left) and Glass-003 (right).