

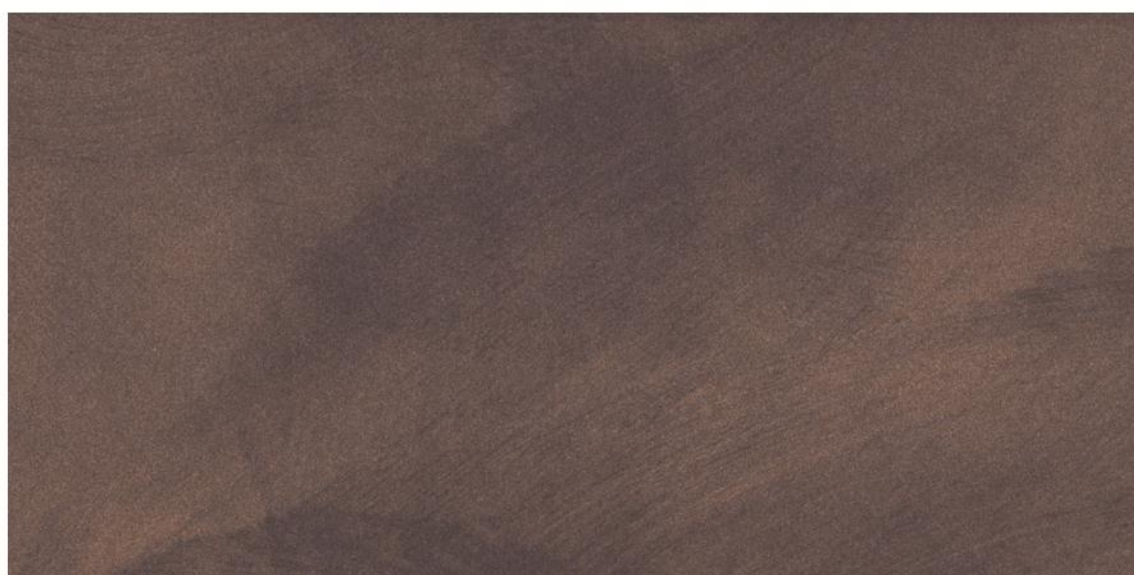
Mirror For Outdoor



Powder Coating: mirror-155S + Heat Transfer Film: 5007/03



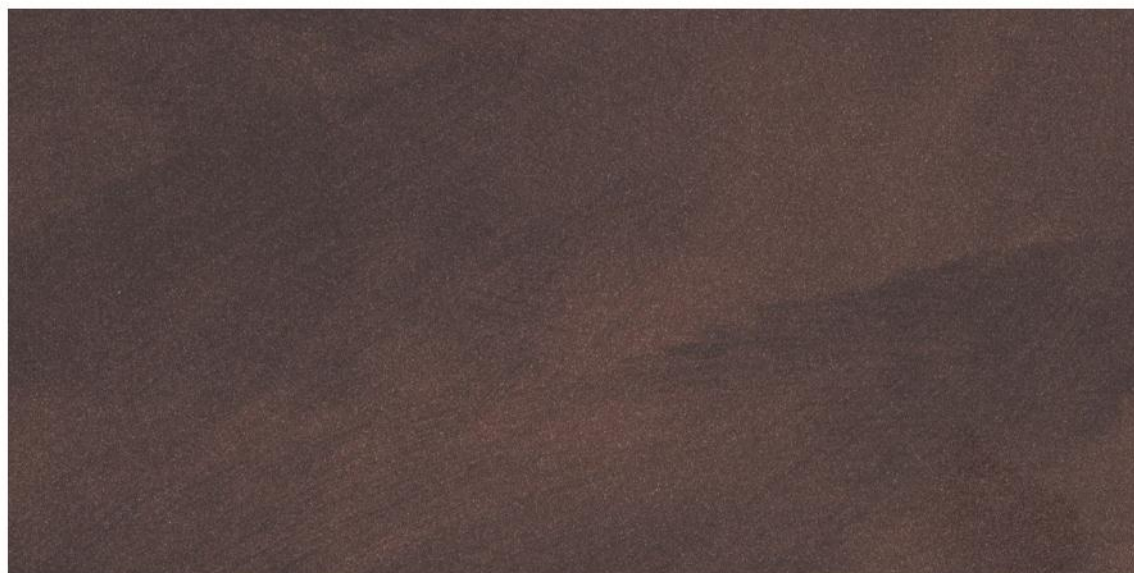
*Powder Coating:
mirror-155S*



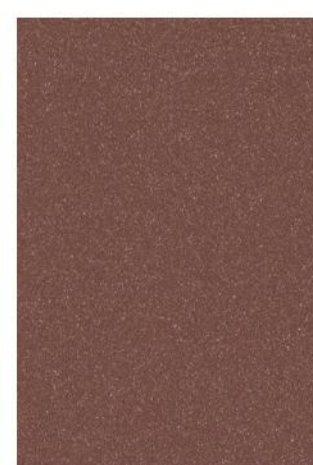
Powder Coating: mirror-217S + Heat Transfer Film: 5007/01



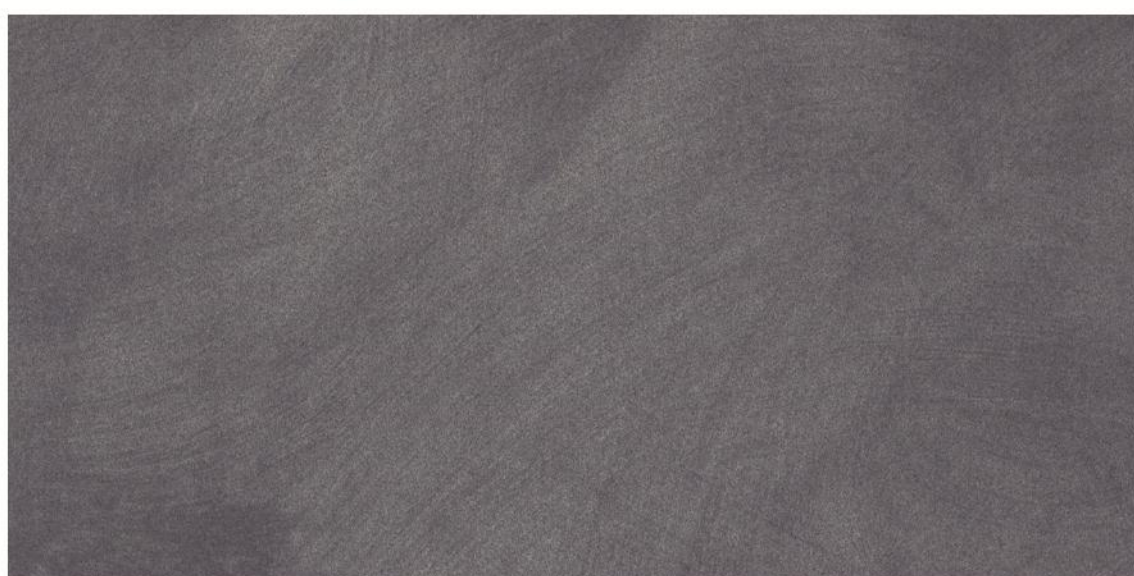
*Powder Coating:
mirror-217S*



Powder Coating: mirror-140S + Heat Transfer Film: 5007/01








*Powder Coating:
mirror-140S*













Powder Coating: mirror-110S + Heat Transfer Film: 5007/01








*Powder Coating:
mirror-110S*

Test Report: Florida Natural Exposure			65
 Florida Test	 Total duration: 12 months		
 EXPOSURE PERIOD: FROM: 25/11/2013 TO: 25/11/2014			
LAB. ID NUMBER: 32962 POWDER COATING: Mirror-1405 HEAT TRANSFER FILM: 5007/01 Colour variation (ΔE): 1,57 residual gloss: 98%			
Technical Remarks Excellent residual gloss and low colour variation (ΔE).			
Technical Opinion: Suitable for OUTDOOR USE			
Test was carried on samples prepared according to technical specifications supplied by raw materials manufacturers.		QUALIDECO REQUIREMENTS The residual gloss must be at least 50% of the original gloss. The final evaluation will be based on visual inspection with the naked eye, with a maximum value of 4 on the grey scale (ISO 105-A02).	
Mod_TR_02_rev02 Laboratory Decoral System		Date: 12/05/2015 ID Report: TR-NE-65-2015	

Test Report: Florida Natural Exposure			64
 Florida Test	 Total duration: 12 months		
 EXPOSURE PERIOD: FROM: 25/11/2013 TO: 25/11/2014			
LAB. ID NUMBER: 32964 POWDER COATING: Mirror-1555 HEAT TRANSFER FILM: 5007/03 Colour variation (ΔE): 1,91 residual gloss: 98%			
Technical Remarks Excellent residual gloss and low colour variation (ΔE).			
Technical Opinion: Suitable for OUTDOOR USE			
Test was carried on samples prepared according to technical specifications supplied by raw materials manufacturers.		QUALIDECO REQUIREMENTS The residual gloss must be at least 50% of the original gloss. The final evaluation will be based on visual inspection with the naked eye, with a maximum value of 4 on the grey scale (ISO 105-A02).	
Mod_TR_02_rev02 Laboratory Decoral System		Date: 12/05/2015 ID Report: TR-NE-64-2015	

Test Report: Florida Natural Exposure			23
 Florida Test	 Total duration: 12 months		
 EXPOSURE PERIOD: FROM: 27/11/2015 TO: 19/12/2016			
LAB. ID NUMBER: 38504 POWDER COATING: Mirror-2175 HEAT TRANSFER FILM: 5007/01 Colour variation (ΔE): 1,97 residual gloss: 97%			
Technical Remarks Excellent residual gloss and low colour variation (ΔE).			
Technical Opinion: Suitable for OUTDOOR USE			
Test was carried on samples prepared according to technical specifications supplied by raw materials manufacturers.		QUALICOAT REQUIREMENTS The residual gloss shall be at least 50% of the original gloss. The ΔE values shall not exceed the maximum values prescribed in the annexed table (see Appendix A7 of Qualicoat Specifications).	
Mod_TR_02_rev02 Laboratory Decoral System		Date: 23/02/2017 ID Report: TR-NE-23-2017	

Test Report: Florida Natural Exposure			68
 Florida Test	 Total duration: 12 months		
 EXPOSURE PERIOD: FROM: 25/11/2013 TO: 25/11/2014			
LAB. ID NUMBER: 32957 POWDER COATING: Mirror-1105 HEAT TRANSFER FILM: 5007/01 Colour variation (ΔE): 1,66 residual gloss: 100%			
Technical Remarks Excellent residual gloss and low colour variation (ΔE).			
Technical Opinion: Suitable for OUTDOOR USE			
Test was carried on samples prepared according to technical specifications supplied by raw materials manufacturers.		QUALIDECO REQUIREMENTS The residual gloss must be at least 50% of the original gloss. The final evaluation will be based on visual inspection with the naked eye, with a maximum value of 4 on the grey scale (ISO 105-A02).	
Mod_TR_02_rev02 Laboratory Decoral System		Date: 12/05/2015 ID Report: TR-NE-68-2015	

